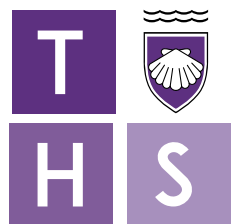




THE HOLMESDALE SCHOOL



Dedicated to Community, Committed
to Equality, Striving for Excellence

Swale Academies Trust

The Holmesdale School provides a calm and purposeful learning environment with traditional classroom expectations and excellent facilities.

Welcome to The Holmesdale School. Our vision is to provide a safe learning environment where all students have access to a high-quality curriculum and where teaching ensures that students are independent, resilient and suitably equipped for life-long learning. We value the celebration of personal excellence on everyone's unique learning journey.

The Holmesdale School has achieved excellent results at both GCSE and Post-16 in recent years. Achieving this caliber of results, consistently, is an endorsement of the hard work from staff, students and parents over the recent years. Refusing to be complacent, we will continue to provide a safe, ambitious and quality environment for all students to strive for excellence in their studies.

The importance of community, alongside academic achievement, ensures students are cared for and are prepared for life after education. Each student has their own unique place in our school community, as we work together to enhance not only the local, but global community.

As part of Swale Academies Trust, our staff and students have access to best practice across a large number of excellent schools in both Kent and East Sussex. As well as extensive training opportunities, there are a number of events and competitions throughout the year that our students are involved in.

Mrs Nicki Hodges MA
Executive Headteacher

Mr Lee Downey Bsc (Hons)
Head of School

WELCOME





‘Students reported that they liked coming to school, that it feels safe. One student even referred to the school being a second home.’ Safeguarding Review 2023



04

'The school supported me throughout Year 11 and continues to push me to overachieve in everything I do. I feel challenged within my lessons and my teachers adapt topics I struggle with in order for me to fully understand.' Year 11 student

At The Holmesdale School, our broad and balanced curriculum has been designed to cater for all students. We have a strong focus on English and mathematics and students have the opportunity to study a range of academic and vocational subjects. This allows them to strive for excellence in their studies as well as learning the skills needed for their future pathways. Students have access to a wide range of subject specialist teachers and excellent facilities to ensure they achieve their potential in everything they do.

Students are set by ability for academic subjects and their progress is reviewed regularly. Interventions are put in place to both support and challenge as needed.

Students also have access to the academic English Baccalaureate pathway. This is a set of subjects at GCSE that keeps young people's options open for further study and future careers.



EXCELLENCE





We encourage our students to aspire to achieve academically and personally. At The Holmesdale School we have created a place where everyone is included and where each person can make a positive contribution. The school's ECCO Values of Engagement, Community, Character and Ownership are promoted by both staff and students, creating a purposeful community. We want our young people to have every opportunity to succeed, not only at The Holmesdale School, but also in later life.

To help accomplish this, we focus on developing growth mindset and the use of oracy. We put emphasis on student voice by providing students with a forum to express themselves. Students are able to become active members of our School Council to help ensure the school community is an inclusive environment for all individuals.

All students are able to access a varied careers programme, which provides them with information and experiences such as outside speakers, workshops, work experience, apprenticeships and visits to universities. These opportunities help support them with their aspirations and gain the employability skills they will need in the future.

'Pupils are proud of their school and the ECCO values of Engagement, Community, Character and Ownership. Pupils' behaviour is good overall.' Ofsted 2021



ENGAGEMENT





Camps International, Costa Rica



Disneyland P



COMMUNITY

08

'Even though I have SEN, I feel that since Year 7 the school has been very helpful and understanding, which has allowed me to succeed.' Year 11 student



Holmesdale students play an active role within the local community. Our students have opportunities to visit places such as residential care homes and local children's hospital wards. Through fundraising, our students are involved in supporting a range of local and national charities and causes.

We offer a pastoral system that ensures all our students are supported throughout their school career by a network of different staff members. This includes support from non-teaching Student Support Managers, Learning Leaders, and Key Stage Principals.

We have developed a strong community-based system so that the academic progress, personal development, and wellbeing of all students are looked after and monitored by several staff.

There are many avenues for communication that parents can use including parent governors, parent surveys and a Parents' Forum, which meets termly with the Head of School or Senior Leaders.

Camps International, Costa Rica

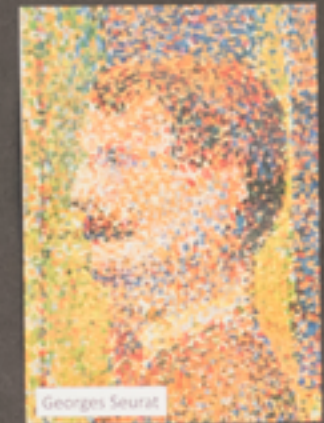


At The Holmesdale School, we are committed to students' progress both inside and outside of lessons. We aim to develop students' leadership, organisation, resilience, initiative and communication skills through a bespoke programme of activities. Through this, we promote health, mental wellbeing and positive lifestyle choices.

We recognise that all students have different strengths and goals. We cater for these through a variety of opportunities built into the formal curriculum and also through extra-curricular activities for example school choir, sports clubs, Lego club and Science club, Creative Writing club and subject based homework clubs.

We help students to develop their appreciation of different cultures by visiting places such as museums, art galleries and the Houses of Parliament. The school has participated in a range of expeditions in Borneo, Costa Rica and Tanzania where they experience first-hand the diversity of the world, enriching not only their lives but the lives of the local communities they visit.





CHARACTER

'Having visited the school and experiencing it in action, there was never any doubt that I would send my child to The Holmesdale School.' Year 7 parent



OWNERSHIP

12

'The Holmesdale School is a purposeful community where pupils and staff work together well.' Ofsted 2021

Our students demonstrate a sense of pride and commitment in all they do, from academic success to sporting endeavour. Students present their work to a high standard and are always eager to showcase their achievements through a range of events.

When students take ownership of their learning, they are more likely to be motivated, engaged, and self-directed. They are also more likely to try new things, persist in the face of challenges, and achieve their academic goals.

In order to support this, teachers empower students, adapt lessons to provide both support and challenge as well as modelling ownership, demonstrating their own enthusiasm for learning.

We also offer a strong student leadership culture that sees our older students take time to support younger members of our community settle into the school. We encourage all students to participate in leadership activities throughout their school life.



We understand the importance of sending your child to the right school for them. The most important advice that we could give you is to look around the school. We welcome visitors to come and tour the school because we are confident that you will enjoy the visit and feel happy with the learning environment and progress that you see.

New students coming to the school are well looked after. We work with local primary schools so that they are able to experience some of our more specialist facilities.

We are very proud of our school and look forward to welcoming your child into our community. Please contact the school regarding possible tour dates and come and see the school in action.



Experience a school dedicated to community, committed to equality, and striving for excellence. Visit online or make an appointment to experience the new Holmesdale School in person.



03



04



05



06



07



08



09



10



11



12

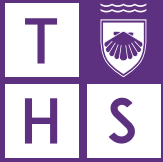


13

ENQUIRE

www.holmesdale.kent.sch.uk

tel. 01634 240416



THE
HOLMESDALE
SCHOOL

The Holmesdale School
Malling Road
Snodland, Kent ME6 5HS

Tel. 01634 240416
Fax. 01634 244041
Email ths_office@swale.at

 facebook.com/theholmesdaleschool

 facebook.com/HolmesdalePE

 [holmesdalepeandsport](https://instagram.com/holmesdalepeandsport)

www.holmesdale.kent.sch.uk

Swale Academies Trust