



4th April 2025

Dear Parents/Carers

### End of Term 4 2025

As springtime and Easter is finally upon us, we have enjoyed the longer days and warmer sunshine here in the school. Our Year 11 and Year 13 students have been preparing themselves for the examination phase of their school life and we are already seeing their potential through recent pre public exam results and BTEC results. If you are a Year 11 parent, please look out for the Easter revision session message which will run during the first week of the holiday.

We have experienced two Teaching and Learning visits from the Trust this term where the school was seen to be a calm and productive learning environment and students were making good progress in their lessons. The general quality of teaching across all three key stages is now consistently in line with our strategy to ensure students can know more and remember more.

In addition, we welcomed three Ofsted inspectors to the school this week and are now looking forward to sharing the report with you all in due course.

### Community Launch Update

We are thrilled to share the successful launch of our new community system: Wembley, Lord's, Twickenham, and Wimbledon! This exciting initiative is designed to boost school spirit and create a stronger sense of belonging for every student and staff member.

The launch event, a fantastic Easter Egg competition, saw students working together with incredible enthusiasm. The eggs they collected were donated to local hospitals, children's wards, and care homes, making a real difference in our community.

We are also partnering with Snodland Council for our upcoming summer fete, promising a fantastic event for everyone. We've secured sponsorship for most of our communities, providing resources for even more exciting activities.

To celebrate student leadership, we are creating honours boards, to be displayed in the canteen, showcasing past Community Captains. We have many more engaging events planned, including an upcoming English competition.

*A member of Swale Academies Trust*

*Registered Office: Ashdown House, Johnson Road, Sittingbourne, Kent ME10 1JS*

*Registered in England No. 07344732*

---



Headteacher: Mr G Prebble BEd (Hons) NPQH

These initiatives are designed to create a vibrant and supportive school environment, offering enriching experiences for all our students. We're excited about the positive impact this will have on our school community!

### Student Leadership Applications

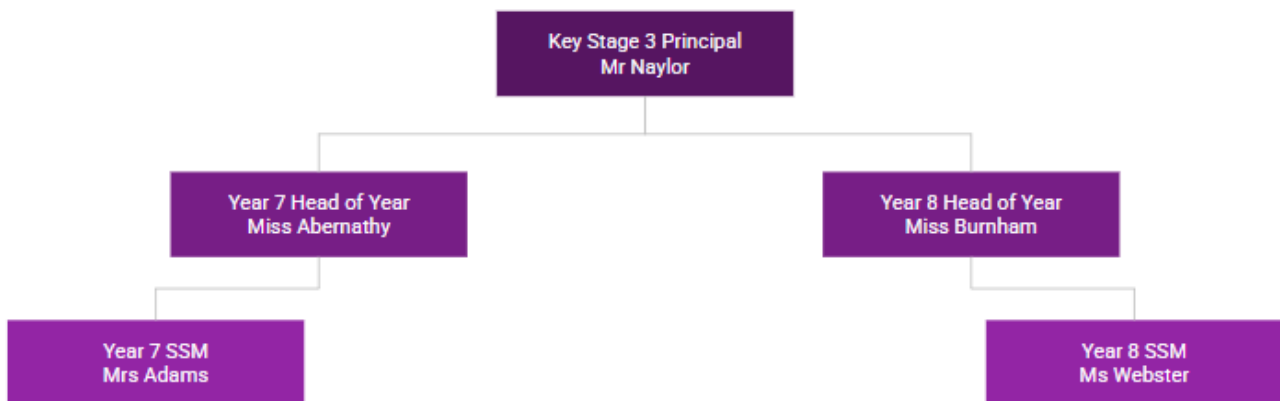
We will be selecting our student leadership team for the Communities in Term 5. Mr Naylor has recently shared a Google form with all students who will need to complete if they wish to make an application. The deadline for applications is Tuesday 22nd April at 6pm. Please can you discuss with your child if they wish to make an application to their community.

The selected Community leader will have their name placed on our new Honours boards which will be mounted over the course of the summer term.

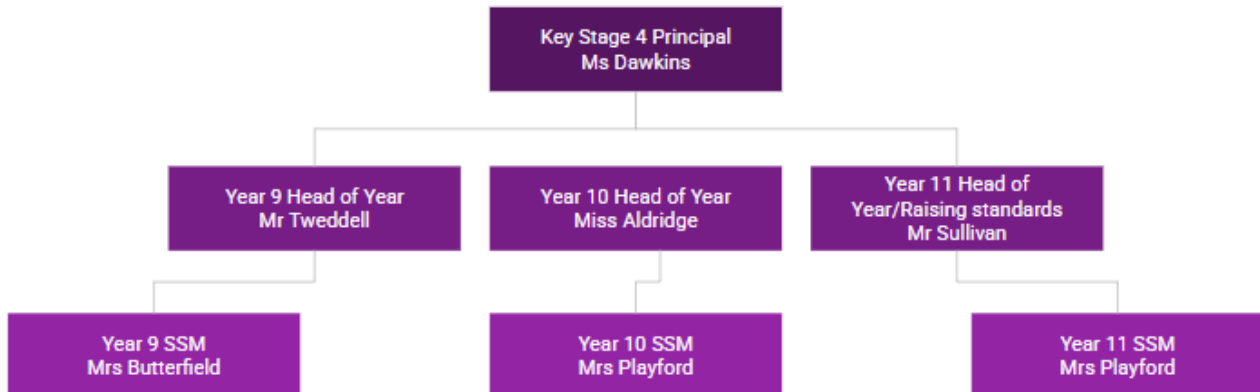
### Pastoral Support

At the Holmesdale School, we understand that your child's well-being is paramount, and we want to continue to reassure you that our school provides comprehensive pastoral care. Our dedicated team is here to support students academically, emotionally, and socially, offering a safe and nurturing environment where they can thrive. We would like to take the opportunity to remind you of the pastoral teams in place around your child.

### Key Stage 3:



## Key Stage 4:



## PE Department Successes

The PE Department has experienced a period of remarkable achievements over the past few terms, driven by outstanding student effort and dedication alongside support from our staff members. This is immediately evidenced by the exceptional BTEC results: Year 11 Sport Students achieved 8 distinctions and 2 distinction\* (star), while Year 13 Sport Students excelled with 3 distinctions and 4 distinction\* (star).

Beyond academic success, the department has fostered a thriving sporting environment. The Year 9 boys' football team's impressive run to the semi-finals of the Maidstone Schools' Football League demonstrates their competitive spirit and skill. Our netball squads across all year groups have shown tremendous development, consistently competing at a high level and securing numerous victories, with a special mention to the undefeated Year 7 netballers.

A significant highlight is the introduction of our exemplary Sports Leaders, who are making an incredible impact on the local community. They have generously volunteered their time, alongside PE staff, to visit primary schools, serving as positive role models and inspiring younger children to embrace active lifestyles. Furthermore, our girls' football squads have undertaken training courses in officiating, coaching, and athlete support, empowering them to assist others in overcoming barriers and achieving their potential.

*A member of Swale Academies Trust*

*Registered Office: Ashdown House, Johnson Road, Sittingbourne, Kent ME10 1JS*

*Registered in England No. 07344732*



**Headteacher: Mr G Prebble BEd (Hons) NPQH**



The department has also successfully secured funding to enhance the fitness suite, resulting in a highly popular facility that promotes student health and wellbeing. The suite is now consistently fully booked, reflecting the students' commitment to fitness.

These achievements represent just a portion of the department's successes - to view more, please visit our Holmesdale PE and Sport Instagram and Facebook pages.

Yours faithfully

Mr G Prebble  
Headteacher

#### Key Dates in Term 5:

First day of Term 5	Tuesday 22nd April
Year 11 Quiz Night	Friday 25th April
KS3 Revision Evening	Thursday 1st May
May Day Bank Holiday	Monday 5th May
Spring Bank Holiday	Monday 26th May
Year 6 Transition Evening	Thursday 8th May
Year 7 Parents' Evening	Tuesday 13th May
SwaleFeast	Thursday 21st May
Year 10 Parents' Evening	Thursday 22nd May
Last Day of Term 5	Friday 23rd May

A member of Swale Academies Trust

Registered Office: Ashdown House, Johnson Road, Sittingbourne, Kent ME10 1JS

Registered in England No. 07344732



Headteacher: Mr G Prebble BEd (Hons) NPQH